



**WARDS
SEA KING**

**OUTBOARD
MOTOR**

PARTS CATALOG

MW-81

6 DELUXE

B.I.A. CERTIFIED BRAKE H.P. AT 4,500 R.P.M.

**MODEL
VWB-52006**

Printed in U.S.A.

9/73

SEA KING—SOLD EXCLUSIVELY BY **MONTGOMERY WARD**

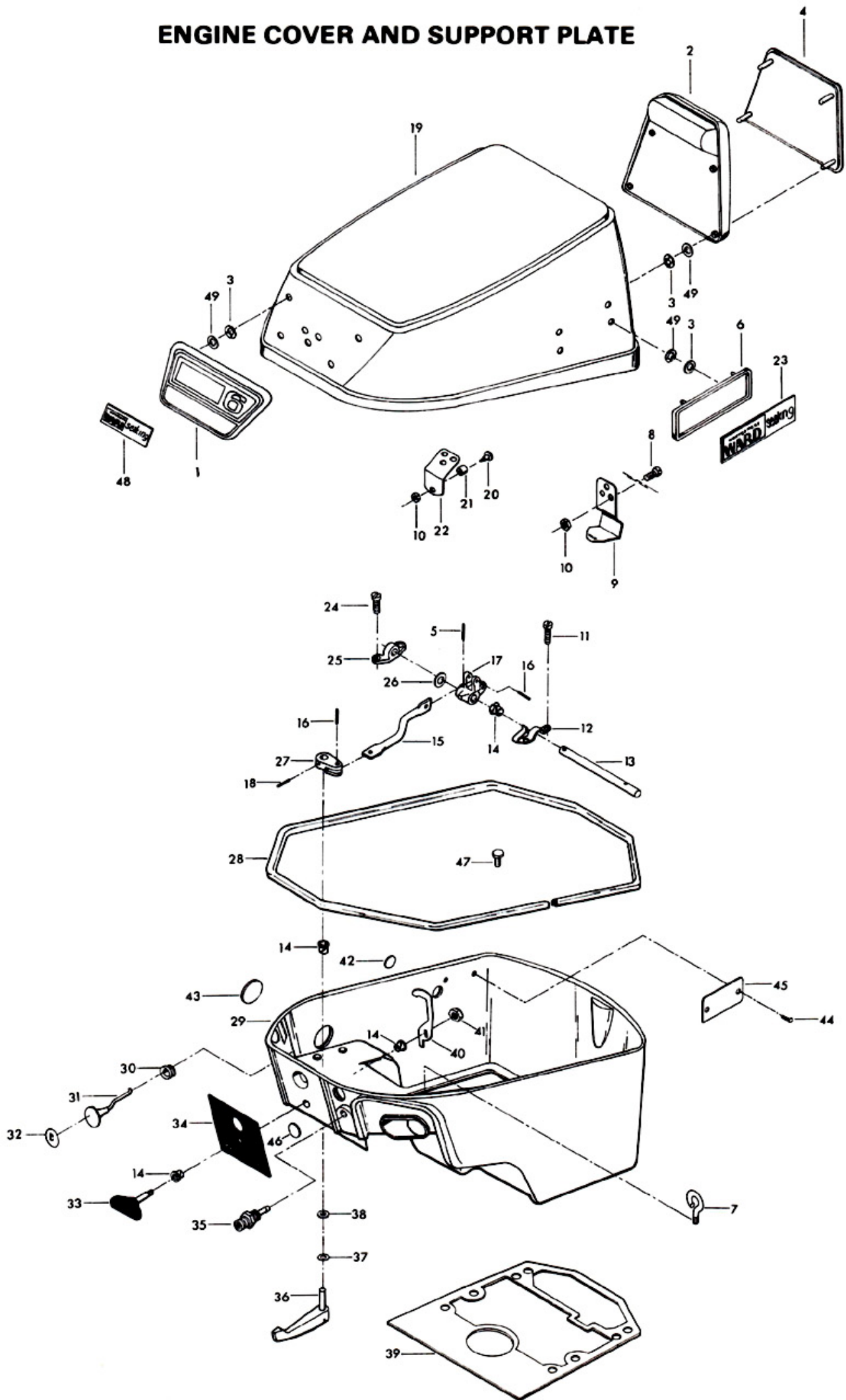
Engine Cover and Support Plate

ILLUS. NO.	PART NO.	QTY.	DESCRIPTION
1	A469888	1	Trim, front
2	392269	1	Handle, tilt
3	1753	16	Fastener
4	469180	1	Trim engine cover, rear
5	8547	1	Spring pin
6	446392	2	Plate, side
7	387873	1	Retainer, hose
8	1475	6	Fill hd screw, 10 - 24 x 1/2
9	A469480	1	Retainer, engine cover w/screws and nuts
10	7011	7	Elastic stop nut, 10 - 24
11	1068	2	Fill hd screw, 10 - 24 x 7/16
12	318895	1	Spring shift detent
13	318871	1	Shaft, gear shift lever
14	307818	4	Bearing
15	318611-1	1	Gear shift rod
16	8537	2	Spring pin
17	318876-1	1	Gear shift lever
18	8540	1	Spring pin
19	A469712	1	Engine cover w/bracket and retainer
20	269316	1	Roller shaft
21	92759	1	Roller
22	2A469774	1	Bracket, cover latch w/screws, nuts and rollers
23	A446892	2	Insert, side plate
24	1574	2	Fill hd screw, 1/4 - 20 x 9/16
25	318818	1	Bearing
26	154415	1	Washer
27	318619	1	Lever, gear shift shaft
28	318756	1	Packing, support plate
29	A318038-2	1	Support plate w/eyelet
30	318504	1	Grommet, choke rod
31	A318503	1	Choke rod w/knob and insert
32	458677	1	Insert, choke knob
33	A286469	1	Knob, cover latch
34	469711	1	Plate, front
35	197767-1	1	Pushing, fuel line
36	A318417	1	Gear shift handle w/shaft
37	8049	1	Bowed washer
38	154415	1	Washer
39	318453-1	1	Gasket, leg mounting
40	286777	1	Cam, cover latch
41	7006	1	Stop nut, 5/16 - 18
42	A387226	1	Plug
43	A343226	1	Plug
44	1293	2	Drive screw, 2 x 3/16
45	A197395-3	1	Plate, identification w/screws
46	469226	1	Plug
47	1689	2	Hex cap screw, 1/4 - 20 x 1/2
48	A469512	1	Insert, front plate
49	85735	16	Seal

NOTE

To obtain identification plate, order part number A197395-3. Order for identification plate must be accompanied by a notarized statement from the dealer, customer and statement from a law enforcement agency verifying that the plate is lost or damaged beyond repair. This statement must also include name and address of owner and model and serial number of motor.

ENGINE COVER AND SUPPORT PLATE



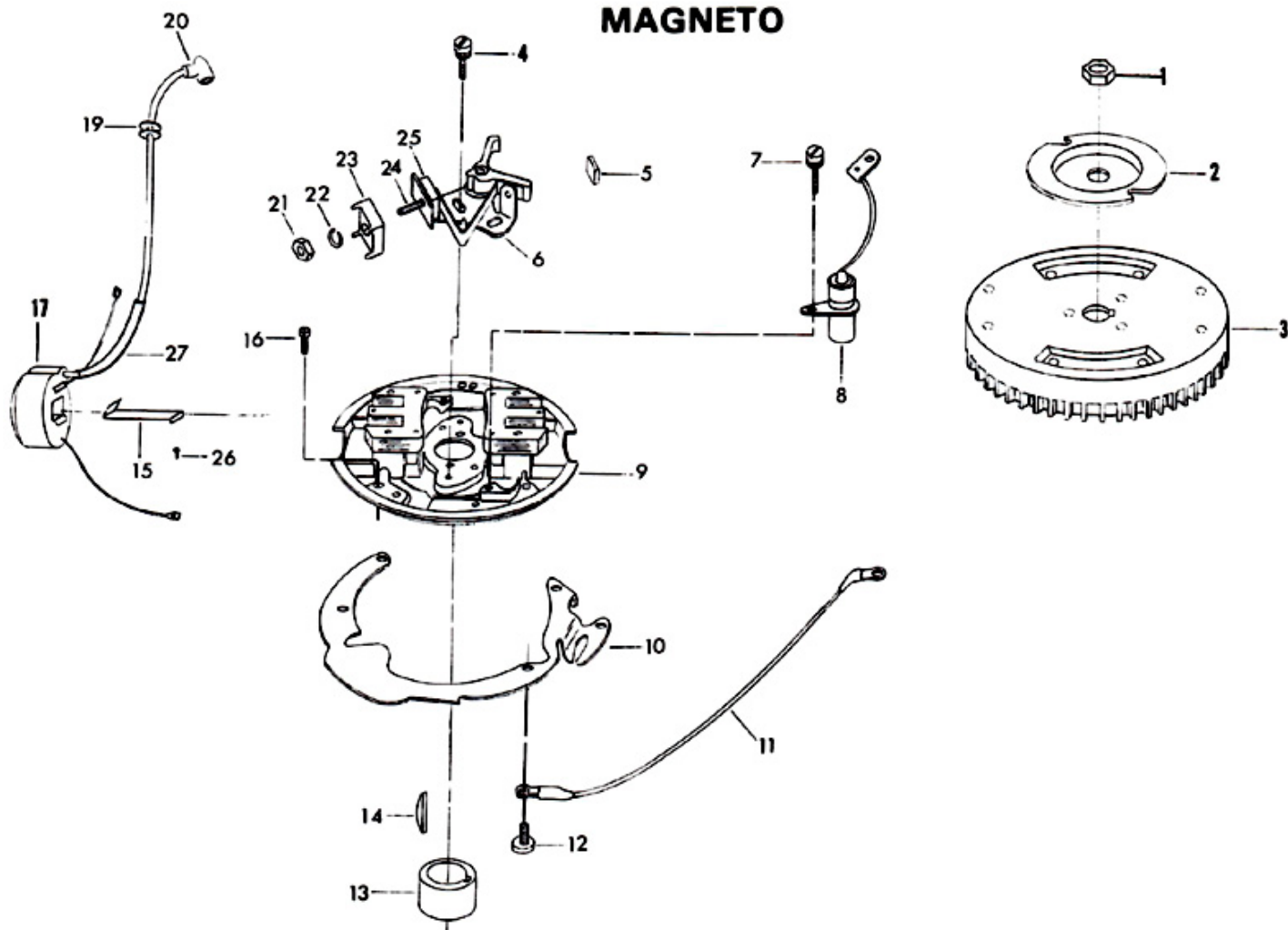
Magneto

ILLUS. NO.	PART NO.	QTY.	DESCRIPTION
1	1352	1	Hex nut, 7/16 - 20
2	901456-1	1	Emergency starter collar
3	318097	1	Flywheel
4	12170	4	Contact screw w/lockwasher
5	12228	1	Cam wiper felt
6	12153	2	Breaker point set
7	12083	2	Condenser screw w/lockwasher
8	12181-1	2	Condenser
9	12343	1	Stator plate w/laminations
10	459192	1	Throttle cam
11	289664	1	Wire, stator ground
12	1075	4	Fill hd screw, 10 - 24 x 1/2
13	59002	1	Magneto breaker cam,
14	54498	1	Magneto key
15	12146	2	Coil wedge spring
16	1090	4	Fill hd screw w/lockwasher, 10 - 24 x 9/16
17	A12231	2	Coil w/lead wire
19	12088	4	Grommet
20	K750-1	2	Sparkie w/spring
21	12127	2	Stud nut
22	8055	2	Lockwasher
23	12128	2	Insulator, outside
24	12142	2	Connection stud
25	12129	2	Insulator, inside
26	12114	2	Screw, coil ground terminal
27	12141	1	Sleeve, high tension lead
	12091	1	Lead wire marker, top (not shown)
		1	Magneto complete, order component parts
		1	Stator plate complete, order component parts

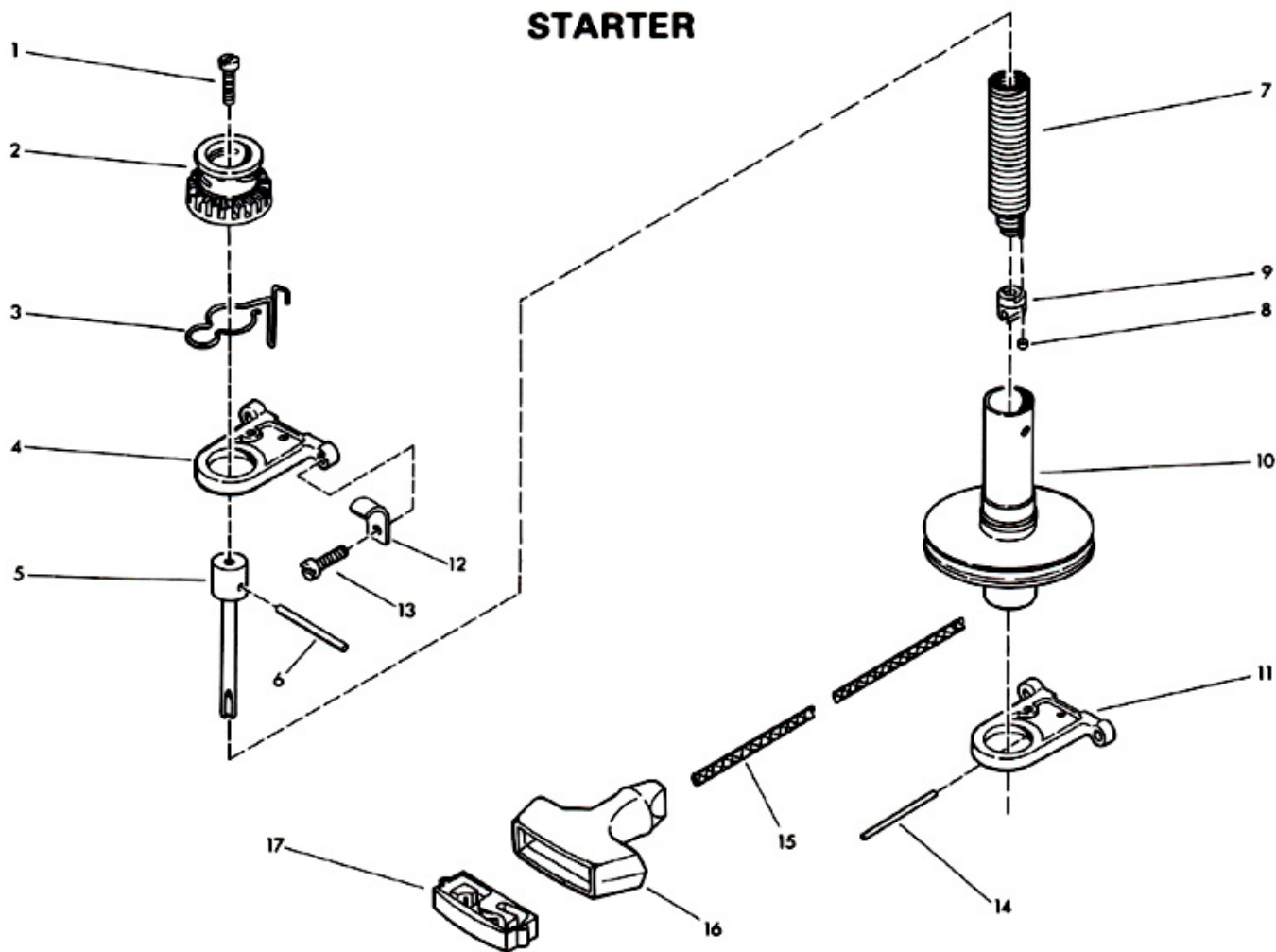
Starter

ILLUS. NO.	PART NO.	QTY.	DESCRIPTION
1	1089	1	Fill hd screw, 10 - 24 x 9/16
2	456674	1	Gear, starter pinion
3	901424-1	1	Starter pinion spring
4	K317427	1	Bracket, starter upper
5	286710	1	Arbor, starter spring
6	40425	1	Starter pinion pin
7	A286970	1	Starter rewind spring w/end and retainer
8	286930	1	End, starter spring
9	286737-1	1	Retainer, starter rewind spring
10	2A459239	1	Starter spool w/shaft
11	K317427	1	Bracket, starter lower w/spring pin
12	286772-1	1	Hose clamp
13	1107	4	Fill hd screw, 1/4 - 20 x 3/4
14	1875	1	Spring pin, starter bracket
15	409232	1	Starter rope
16	286132	1	Handle, starter rope
17	K286817-1	1	Retainer, starter rope handle

MAGNETO



STARTER



Fuel System

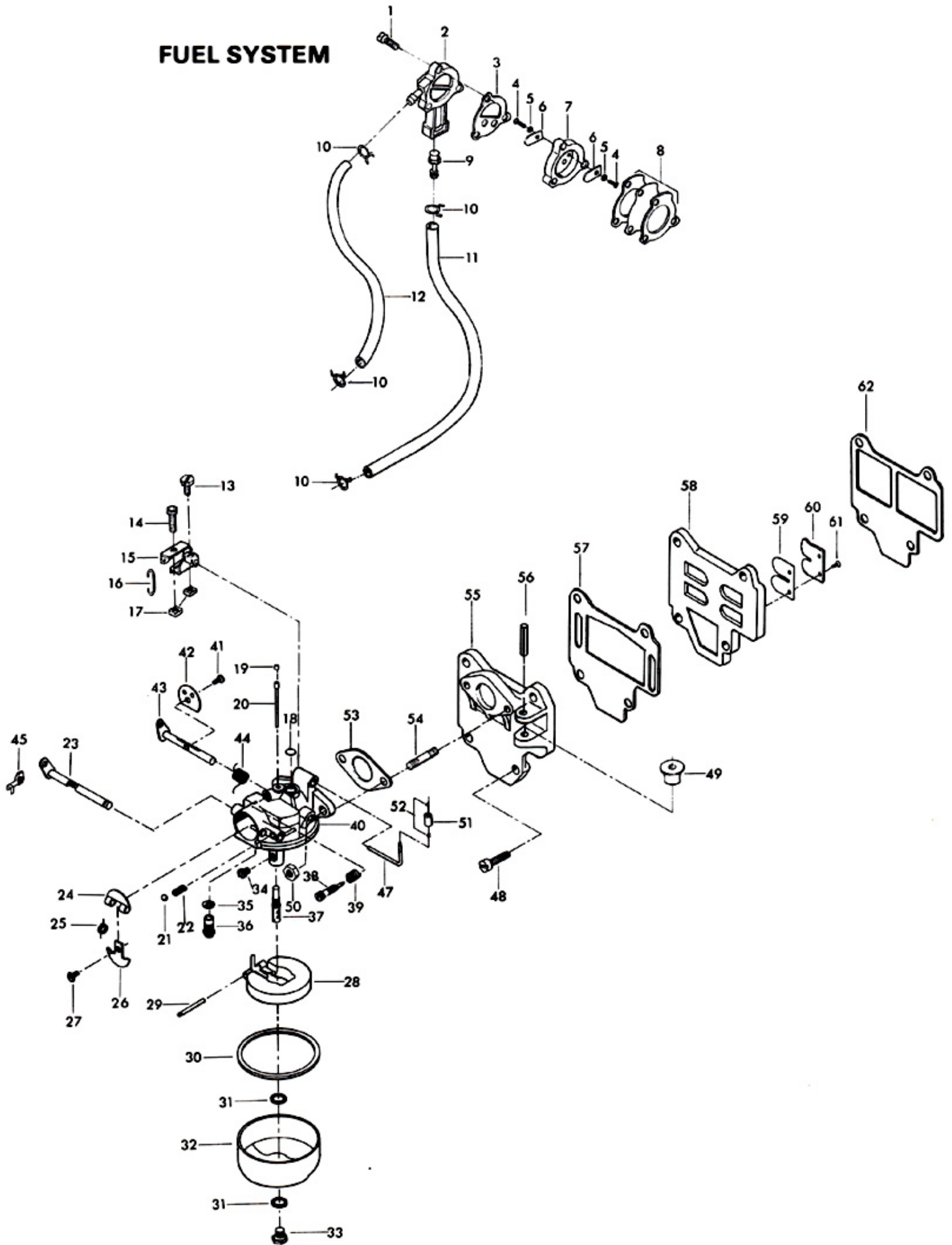
ILLUS. NO.	PART NO.	QTY.	DESCRIPTION
1	1069	3	Fill hd screw, 10 - 24 x 1 1/16
2	901746-1	1	Fuel pump cover
3	24748	1	Gasket, fuel pump cover
4	1286	2	Pan hd screw, 4 - 40 x 3/16
5	8003	2	Plain washer
6	18160-1	2	Reed fuel pump
7	A24757-3	1	Fuel pump reed plate w/reeds and screws
8	2A24747-1	1	Fuel pump diaphragm w/gaskets
9	901811	1	Fuel pump filter
10	2706772	4	Hose clamp
11	A71754	1	Fuel line w/clamps
12	A24754-1	1	Fuel line w/clamps
13	1558	1	Hex slot hd screw, 10 - 24 x 3/8
14	1834	1	Fill hd screw, 10 - 24 x 7/8
15	A286190-1	1	Arm, carburetor adjusting
16	66193	1	Throttle link
17	1365	2	Square nut, 10 - 24
18	* 02531	1	Body channel welch plug
19	* 010588	1	Body channel cup plug
20	016120	1	Bypass tube
21	04784	1	Choke friction ball
22	08805	1	Choke friction spring
23	015720	1	Choke shaft and lever
24	015368	1	Choke relief valve
25	016161	1	Choke relief valve spring
26	015367	1	Choke shutter
27	010280	1	Choke shutter retaining screw and lockwasher
28	013554	1	Float
29	* 013944	1	Float lever pin
30	015623	1	Fuel bowl gasket
31	02510	2	Fuel bowl retaining screw gasket
32	015366	1	Fuel bowl
33	013945	1	Fuel bowl retaining screw
34	* 014635	1	Main fuel jet (.034)
35	010165	1	Inlet seat gasket
36	* 010790	1	Inlet needle, seat and gasket
37	* 015722	1	Main nozzle
38	* 015520	1	Idle mixture screw
39	* 011103	1	Idle mixture screw spring
40		1	Carburetor complete, order 429061
41	* 08942	1	Throttle shutter retaining screw and lockwasher
42	08502	1	Throttle shutter
43	015718	1	Throttle shaft and lever
44	* 015526	1	Throttle shaft return spring
45	341384	1	Retainer, choke rod
47	318316	1	Throttle cam follower
48	1201	4	Fill hd screw, 1/4 - 20 x 3/4
49	286435-3	1	Pulley starter rope
50	1490	2	Hex nut, 1/4 - 20
51	318318	1	Roller, throttle cam follower
52	78410	2	Retainer
53	18906	1	Carburetor gasket
54	2788004	2	Stud, carburetor
55	2A341167-1	1	Manifold w/studs, pulley, washer and spring pin
56	1876	1	Spring pin
57	318168	1	Gasket, manifold
58	A387158	1	Reed plate w/reeds, stops and screws
59	31160-1	2	Reed
60	424161	2	Reed stop
61	1298	4	Rd hd screw, 6 - 32 x 1/4
62	318159	1	Gasket, reed plate
	429061	1	Carburetor complete, CO6A
	* 10006	1	Gasket set (not shown)
	10008	1	Repair parts kit (not shown)

Asterisk (*) indicates contents of repair parts kit.

OPTIONAL SIZE MAIN FUEL JET (Use Only At Altitudes Indicated)

	<u>Sea Level-3000 Ft.</u>	<u>3000-6000 Ft.</u>	<u>6000 and Up</u>
Size	.034	.032	.030
Part No.	014635	014634	015207

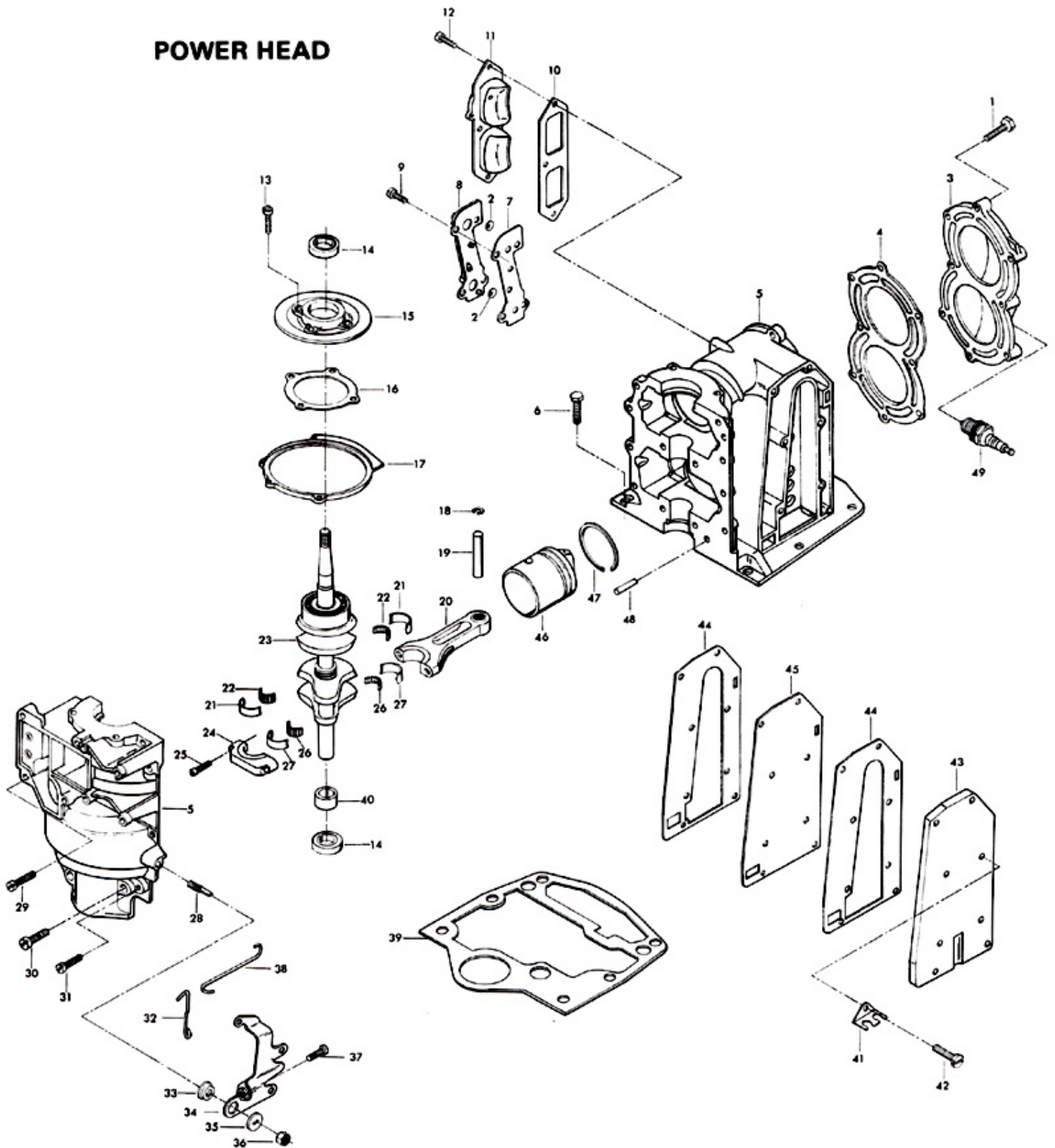
FUEL SYSTEM



Power Head

ILLUS. NO.	PART NO.	QTY.	DESCRIPTION
1	901938-1	8	Screw, cylinder head
2	429811	2	Screens, cylinder drain
3	318518-3	1	Cylinder head
4	318529	1	Cylinder head gasket
5	A429010-1	1	Cylinder w/crankcase cover, dowel pins, screws and stud
6	1823	6	Hex hd cap screw, 5/16 - 18 x 1
7	429472	1	Gasket, cylinder drain cover
8	A429471	1	Cylinder drain cover w/check valves and screens
9	1239	4	Hex slot hd screw, 1/4 - 20 x 5/8
10	318223	1	Gasket, transfer port cover
11	318222	1	Transfer port cover
12	1502	3	Hex hd screw, 1/4 - 20 x 5/8
13	1111	4	Fill hd screw, 1/4 - 20 x 7/8
14	141118	2	Seal, crankshaft
15	A318144	1	Cage, crankshaft bearing w/seal
16	286277	1	Gasket, crankshaft bearing cage
17	73082	1	Magneto stator ring
18	31410	4	Retaining ring, piston pin
19	7017	2	Piston pin
20	2A430016	2	Connecting rod w/cap and screws
21	A286655	1	Main bearing liner set (2 per set)
22	286571	1	Center main bearing rollers (26 per set)
23	A318018-1	1	Crankshaft w/upper main bearing. Upper main bearing not sold separately. Contact area service manager for authorization to return crankshaft for bearing replacement.
24			Order 2A430016 connecting rod
25	286634	4	Connecting rod screw
26	318228	2	Connecting rod, roller set (24 per set)
27	A318229	2	Connecting rod liner set (2 per set)
28	286440	1	Stud, magneto control lever
29	1111	2	Fill hd screw, 1/4 - 20 x 1
30	1798	4	Fill hd screw, 5/16 - 18 x 1 1/4
31	1107	6	Fill hd screw, 1/4 - 20 x 3/4
32	387445-1	1	Link, magneto control rod
33	183813	1	Bearing, magneto control lever
34	A387081	1	Lever, magneto control
35	286282	1	Washer
36	1803	1	Stop nut, 5/16 - 24
37	1052	1	Fill hd screw, 1/4 - 20 x 1
38	318509-2	1	Link, throttle cam
39	318279-1	1	Gasket, cylinder mounting
40	343014	1	Bearing, crankshaft lower main
41	901834	1	Clip, lead wire
42	1240	8	Hex slot hd screw, 1/4 - 20 x 7/8
43	318152	1	Cover, exhaust
44	318154	2	Gasket, exhaust cover
45	318151	1	Plate, exhaust
46	A429015	2	Piston
47	A317260	2	Piston ring set (3 per set)
48	8559	2	Dowel pin
49	S174227	2	Spark plug (L-4-J)
	G1004-1	1	Gasket set (not shown)
	K-737	1	Engine touch-up paint spray bomb Frost White Flat
	K-748	1	Engine touch-up paint spray bomb, Gold enamel

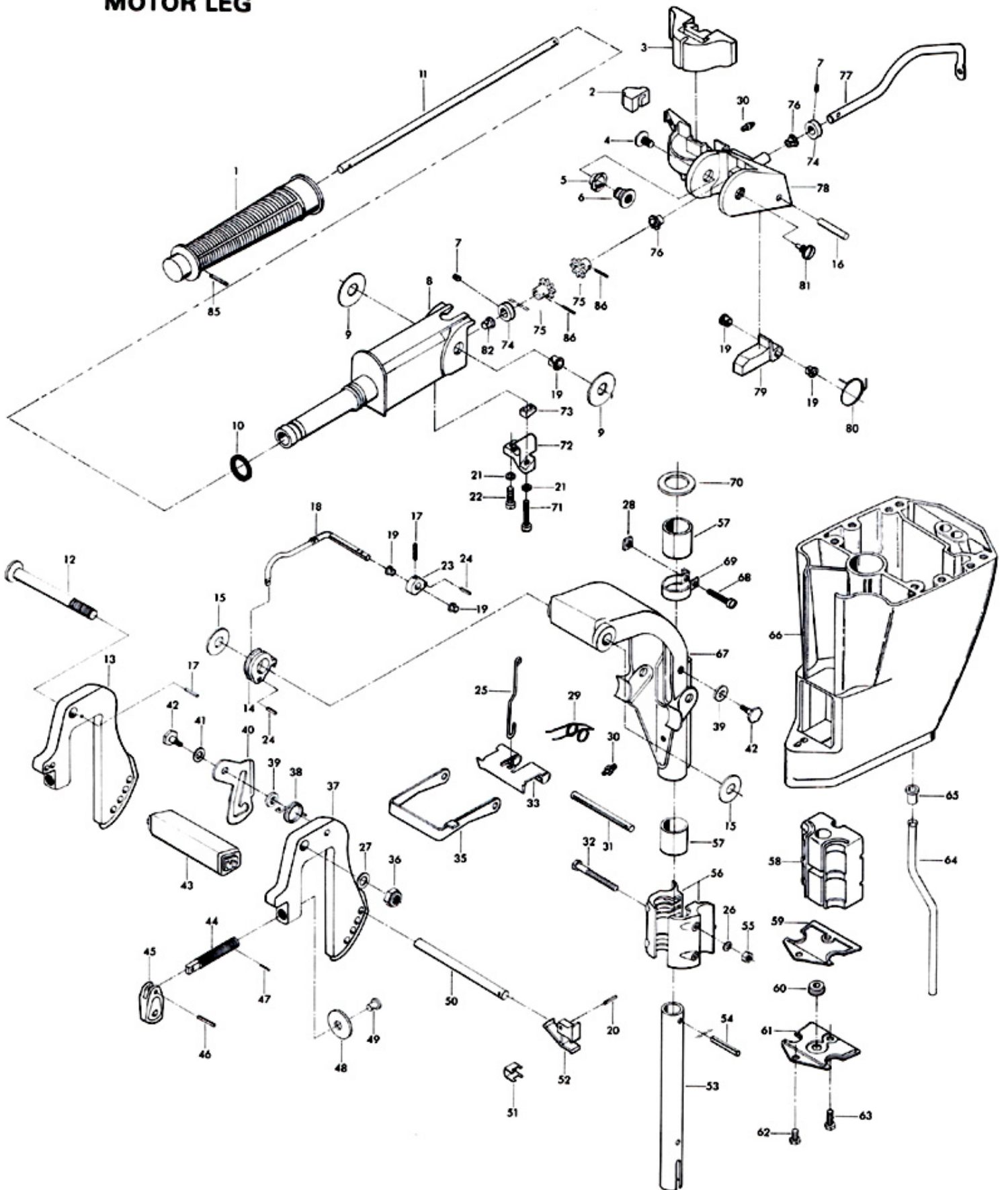
POWER HEAD



Motor Leg

ILLUS. NO.	PART NO.	QTY.	DESCRIPTION
1	A447137	1	Grip, steering handle
2	318539	1	Bumper
3	318347	1	Shock mount upper
4	1799	1	Truss hd screw, 5/16 - 18 x 5/8
5	286818	1	Fearing, steering handle insert
6	286224	1	Insert, steering handle
7	1859	2	Socket hd set screw, 1/4 - 28 x 3/16
8	392079	1	Steering handle
9	286220	2	Washer
10	53795-1	1	Steering handle grip dampener
11	447688	1	Shaft, steering handle
12	318037	1	Stern bracket pivot bolt
13	S286032	1	Stern bracket starboard w/clamp screw and foot
14	286827	1	Lever, reverse lock release
15	286286-1	2	Washer, stern bracket
16	1807	1	Groove pin
17	8538	2	Spring pin
18	A387742	1	Lever reverse lock intermediate
19	197813	5	Bearing
20	8540	1	Spring pin
21	8058	2	Internal tooth lockwasher
22	1475	1	Fill hd screw, 10 - 24 x 1/2
23	286364	1	Lever, reverse lock
24	1794	2	Spring pin
25	A341510	1	Link, reverse lock lever
26	8083	2	Spring lockwasher
27	8039	1	Plain washer
28	1608	1	Nut, 1/4 - 20
29	286300	1	Spring, reverse lock
30	213274	2	Grease fitting
31	1839	1	Groove pin
32	A1844	2	Hex bolt, 1/4 - 20 x 2 3/8
33	318349	1	Reverse lock
35	318433	1	Bracket, shallow water drive
36	7005	1	Stop nut, 3/8 - 16
37	S286532	1	Stern bracket port w/clamp screw and foot
38	286544-1	1	Spring, tilt lock
39	286451	2	Spacer, tilt lock
40	429541	1	Tilt lock
41	1666	1	Bowed spring washer
42	286422-1	2	Tilt lock pivot
43	318647	1	Carrying handle
44	A298073-1	2	Clamp screw w/foot
45	298075	2	Handle, clamp screw
46	8554	2	Spring pin
47	8536	2	Spring pin
48	24074	2	Clamp screw foot
49	66480	2	Stud clamp screw
50	A318113	1	Lock bar w/handle and spring
51	286461	1	Spring, lock bar handle
52	286114	1	Lock bar handle
53	318019	1	Kingpin
54	1805	1	Spring pin
55	1341	2	Hex nut, 1/4 - 20
56	318956	2	Bracket, shock mount lower
57	286169	2	Bearing, swivel bracket
58	318346	1	Shock mount lower
59	318967	1	Gasket, shock mount plate
60	318861	1	Seal, shock mount plate
61	318963	1	Plate, shock mount lower
62	1689	1	Finished hex bolt, 1/4 - 20 x 1/2
63	1689	1	Finished hex bolt, 1/4 - 20 x 1/2
64	409244	1	Water line
65	318342	1	Seal, inlet water line upper
66	487133	1	Motor leg
67	A318072-1	1	Swivel bracket w/grease fitting
68	1820	1	Fill hd screw, 1/4 - 20 x 1 3/8
69	286573-1	1	Steering friction clamp
70	286011	1	Washer, swivel bracket
71	1829	1	Fill hd screw, 10 - 24 x 7/8
72	341816	1	Bearing, steering handle
73	341693	1	Wedge, steering handle
74	A343178	2	Retainer
75	S487815	2	Steering handle gear
76	307818	2	Bearing
77	429838	1	Shaft, magneto control
78	A341582-1	1	Steering arm
79	286490	1	Stop, steering handle
80	286868	1	Spring, steering handle stop
81	286080	1	Screw, steering handle pivot
82	85610	1	Bearing
85	8548	1	Spring pin
86	1978	2	Spring pin
	392894-1	1	Steering handle indicator (not shown)
	392387	1	Decal, tilt release (not shown)

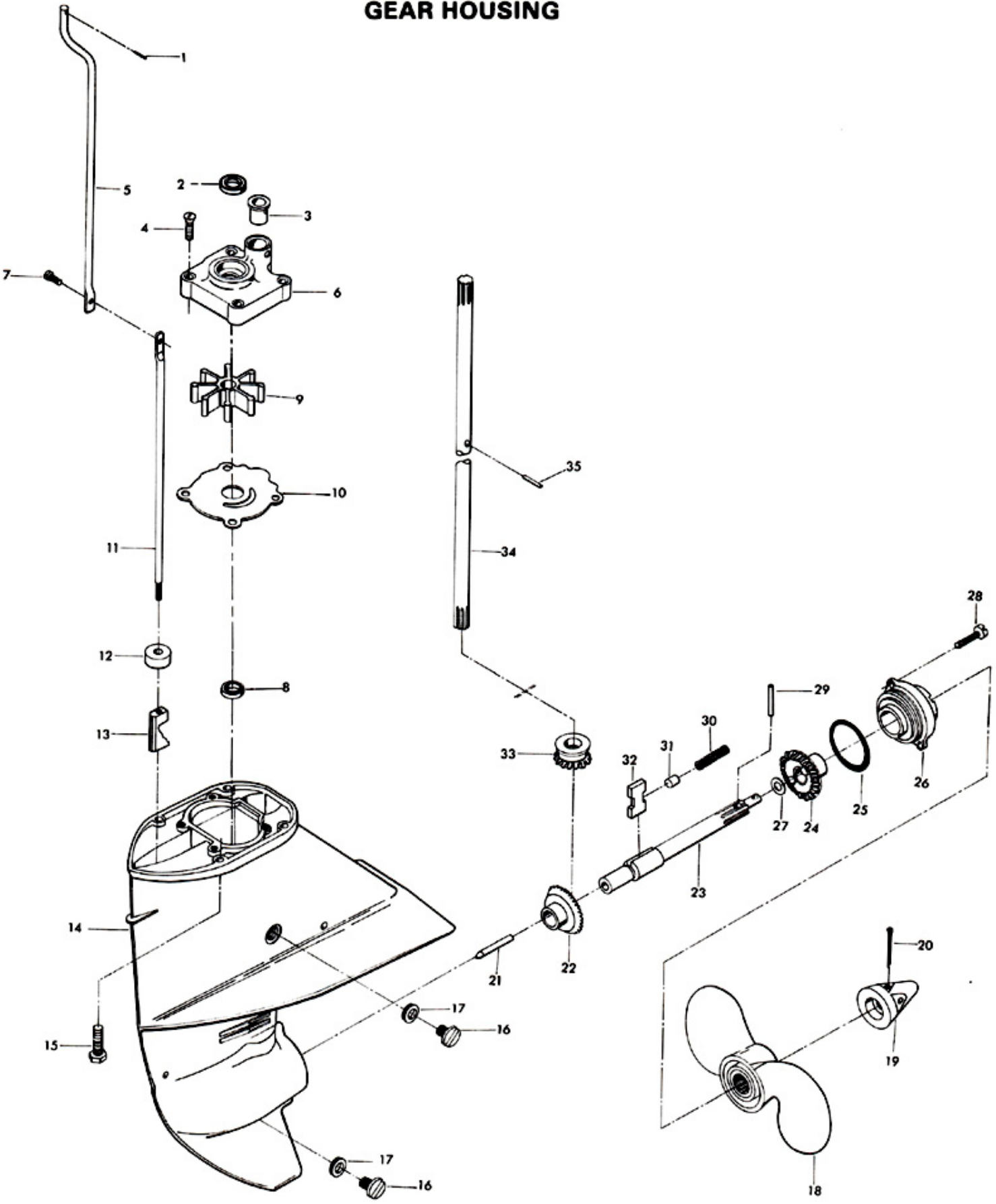
MOTOR LEG



Gear Housing

ILLUS. NO.	PART NO.	CTY.	DESCRIPTION
1	1850	1	Spring pin
2	318307	1	Seal, water pump
3	55914	1	Seal, inlet water line
4	1150	4	Flat hd screw, 1/4 - 20 x 1 1/8
5	318615	1	Gear shift rod upper
6	A387060-1	1	Water pump body w/seal
7	1976	1	Socket hd screw w/washer, 10 - 24 x 1/2
8	318307	1	Seal, driveshaft
9	429065	1	Water pump impeller
10	341562	1	Water pump back plate
11	286705	1	Gear shift rod lower
12	318618	1	Seal, gear shift rod lower
13	387721	1	Clutch shift cam
14	A430054	1	Gear housing w/bearings, plug and washer
15	430732	8	Hex hd screw, 5/16 - 18 x 1 1/4
16	50109	2	Gear housing plug
17	8077	2	Nyltite washer
18	P409	1	Propeller (Accessory Item)
19	A286094	1	Propeller nut w/cotter pin
20	1846	1	Cotter pin
21	901728	1	Clutch shift pin
22	A318023-3	1	Bevel gear w/bearing
23	A409098	1	Propeller shaft w/shim and clutch spring
24	A318023-3	1	Bevel gear w/bearing
25	286305	1	Seal, propeller shaft bearing cage
26	2A318298-1	1	Propeller shaft bearing cage w/bearing and seal
27	317717	1	Washer
28	1802	2	Fill hd screw, 1/4 - 20 x 9/16
29	A324101	1	Propeller pin, pack of 3
30	409719	1	Clutch spring
31	318372	1	Pin, clutch guide
32	409521	1	Clutch
33	318266	1	Gear, bevel pinion
34	318128	1	Driveshaft
35	50563	1	Water pump impeller drive pin

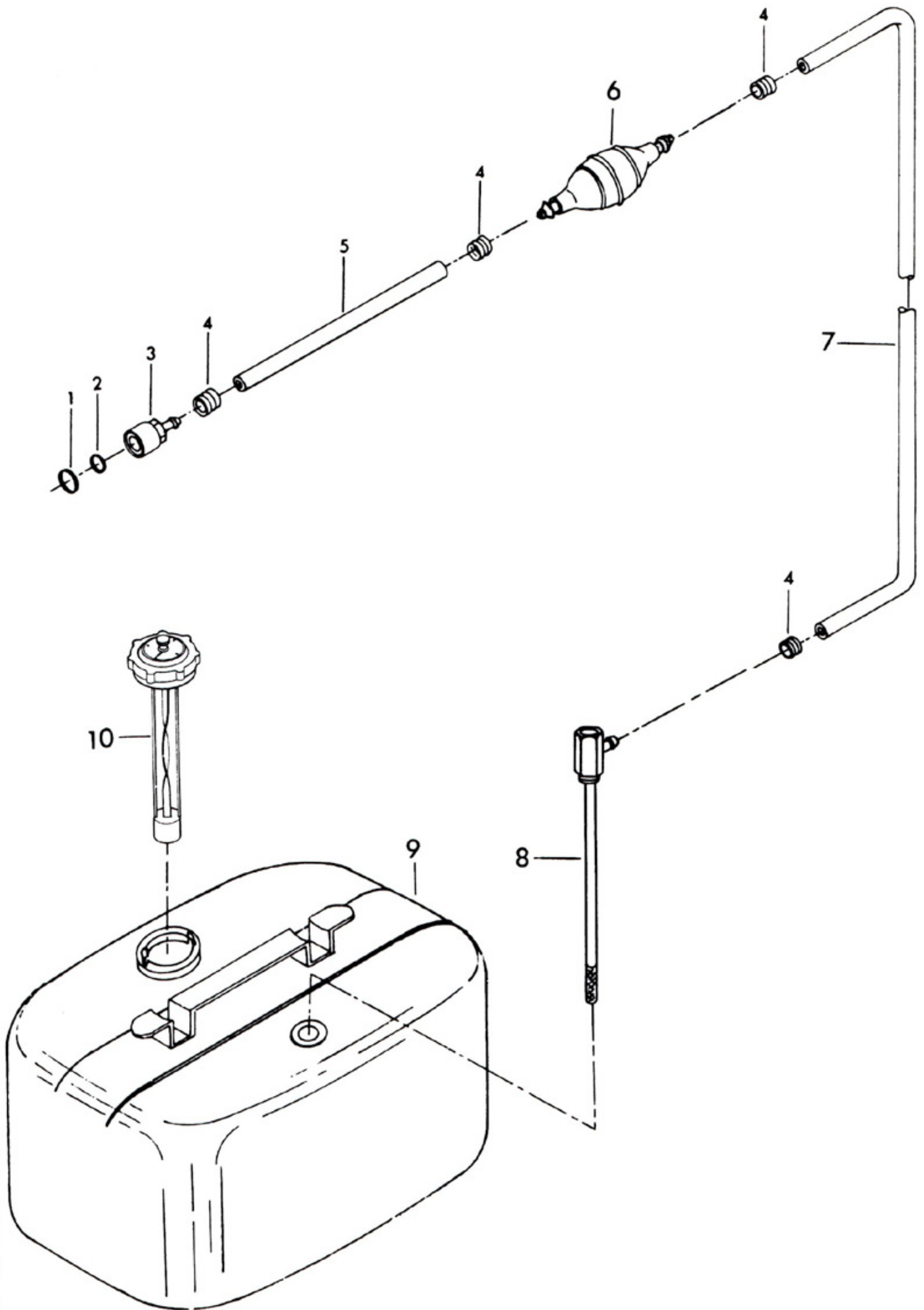
GEAR HOUSING



Fuel Tank and Line

ILLUS. NO.	PART NO.	QTY.	DESCRIPTION
1	213342	1	Seal, fuel line coupler
2	213735	1	Seal, fuel line coupler
3	197787-2	1	Fuel line coupler
4	298788	4	Ferrule
5	A84754-1	1	Fuel line short w/ferrules
6	S387766-1	1	Prime bulb
7	A197752-1	1	Fuel line, long w/clamp and ferrule
8	310755-2	1	Fuel tank adapter
9	9273	1	Fuel tank (Accessory Item)
10	213251	1	Gauge cap
	S409752	1	Fuel line complete (not shown)
	224394-3	1	Decal, Fuel mixture (not shown)

FUEL TANK AND LINE



Specifications

HORSEPOWER -- 6 B. I. A. Certified Brake H. P. at 5000 R. P. M.

ENGINE -- Two-Cycle, Twin Cylinder, Alternate Firing.

BORE AND STROKE -- 1 7/8" x 1 5/8".

DISPLACEMENT -- 8.99 Cubic Inches.

CARBURETOR -- Float Feed.

CONNECTING ROD -- Die Cast Aluminum - Steel Liners With Needle Bearings at Crankshaft.

CRANKSHAFT -- Forged Nickel Steel. Ball Bearings at Upper Main. Full Complement Needle Rollers at Center Main.

RECOMMENDED OPERATING RANGE -- 4500 - 5500 R. P. M.

FUEL TANK -- Separate Steel Tank - 6 U. S. Gallons, 5 Imperial Gallons.

PROPELLER SHAFT AND DRIVESHAFT -- Stainless Steel, Hardened, Ground and Polished.

PROPELLER -- Aluminum Alloy - 8" Diameter, 5" Pitch, Right Hand Rotation.

COOLING -- Water Cooled - Positive Displacement Type Water Pump.

TRANSOM HEIGHT -- 15".

WEIGHT -- 49 Pounds.

TILT LOCK -- Positive Tilt Lock Permits Engine to Remain in Tilted Position When Not in Use.

Lubrication Chart

PART NAME

Starter Pinion Gear
Starter Spool Bearings
Throttle Cam Follower
Magneto Control Shaft Bearings
Steering Handle Pinion Gear
Steering Handle Bevel Gear
Reverse Lock
Clamp Screws
Stern Bracket Pivot Bolt
Gear Housing
Fuel Line Coupler Release Ring

TYPE OF LUBRICANT

SAE 30 Motor Oil
SAE 30 Motor Oil
SAE 30 Motor Oil
SAE 30 Motor Oil
EP-All Purpose Chassis Lubricant
EP-All Purpose Chassis Lubricant
SAE 30 Motor Oil
SAE 30 Motor Oil
SAE 30 Motor Oil
SAE 30 Motor Oil
Wards Sea King Hypoid Outboard Gear Oil
SAE 30 Motor Oil

HOW OFTEN

If Starter Operation Becomes Sluggish
If Starter Operation Becomes Sluggish
Twice Each Season, Oftener if Required
Twice Each Season, Oftener if Required
Twice Each Season, Oftener if Required
Twice Each Season, Oftener if Required
Twice Each Season, Oftener if Required
Twice Each Season, Oftener if Required
Twice Each Season, Oftener if Required
Twice Each Season, Oftener if Required
Every 30 Hours, Oftener if Required
Twice Each Season, Oftener if Required

GREASE FITTINGS -- Grease Fittings Are Provided at Critical Points Where Bearing Surfaces Are Not Exposed Externally. Using an Automotive Type Grease Gun and Lubricant, Grease Twice Each Season or Oftener if Required.

Special Adjustments

BREAKER POINT GAP -- .020".

SPARK PLUG -- Champion L-4-J, Gap .030".

ADJUSTING STEERING TENSION -- Steering Tension Can Be Adjusted by Turning the One (1) Steering Friction Adjusting Screw, Illustration 68, Page 11, in the Direction Required.

POINT OF THROTTLE OPENING -- Set the Position of the Throttle Cam Follower Roller, Illustration 51, Page 7, So that the Throttle Shutter in the Carburetor Will Be CLOSED and All Slack REMOVED from the Linkage When the Throttle Cam Follower is on the Throttle Pick Up Point Mark on the Throttle Cam Plate.

FLYWHEEL NUT -- Torque to 40-50 Foot Pounds.